



WHAT IS WILDLIFE ENFORCEMENT MONITORING SYSTEM (WEMS)?

WEMS is a web-based information system with GIS functionality developed by United Nations University in 2005 to support governments needs in collecting, compiling and sharing wildlife law enforcement information.

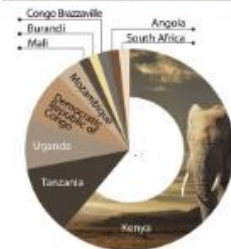
VISION

WEMS initiative aims to be an action-oriented tool that will lead to the collaborative enforcement of legislations related to biodiversity and species conservation and support monitoring of SDGs.

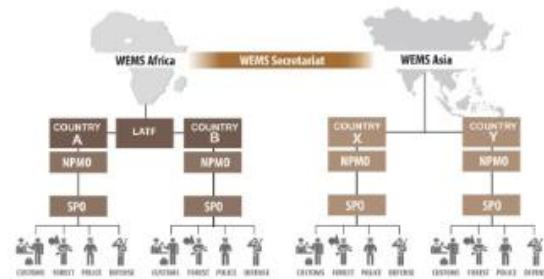
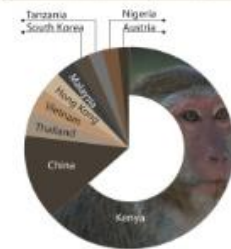


The information-sharing protocol under WEMS will be as depicted in the diagram below. For WEMS Africa, the LATF will facilitate the information exchange; while the role for WEMS Asia will be managed through the WEMS Secretariat at AIT.

Origin Countries | Number of Cases



Destination Countries | Number of Cases



WEMS SUPPORTS



Multilateral Environmental Agreements (MEAs)



"...information obtained from geographical mapping platforms such as the Wildlife Enforcement Monitoring System could be used to determine key variables needed to understand the state of biodiversity and the changes it was undergoing."

Source: United Nations, General Assembly, Report on the United Nations/ Korea Conference on Space Technology Applications for Wildlife Management and Protecting Biodiversity: report of the Committee on the Peaceful Use of Outer Space, A/AC.105/11.26 (27 October 2016), available from undocs.org/A/AC.105/11.26.

www.wems-initiative.org



WHAT IS WEMS?

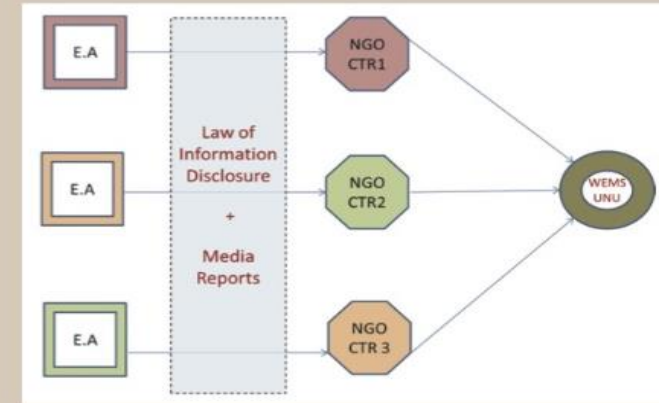


- A GIS-based model to monitor effectiveness of and compliance to legislation at national and regional level
- A common platform for sharing information of wildlife crimes among local and national public sector agencies
- A tool to integrate national efforts regionally and globally and ensure timely analysis and subsequent policy development
- A solution to monitor compliance with CITES and other relevant MEAs

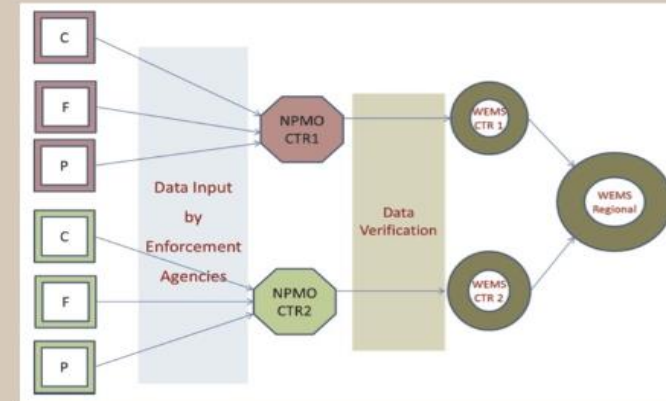


HISTORY

- WEMS as a civil-society based information gathering process through Asian Conservation Alliance (ACA)
 - Freedom of Information Act
- WEMS as a working model for national/ regional enforcement bodies
 - Sovereignty Principle: State as the fundamental guarantor of information locally
 - Enforcement Jurisdiction: State as sole proprietor to enforce legislation
- WEMS deployment in East Africa through LATF in 2011
 - Congo-Brazzaville, Kenya, Liberia, Tanzania, Uganda and Zambia



Source: If WEMS is the solution, what is the problem?



ENFORCEMENT MONITORING SYSTEM (WEMS)?

on system with GIS functionality developed by United Nations University
ts needs in collecting, compiling and sharing wildlife law enforcement



**GEO-SPATIAL
INFORMATION
SYSTEM**



**MAPPING
PLATFORM**



**REPORTING
TOOLS**



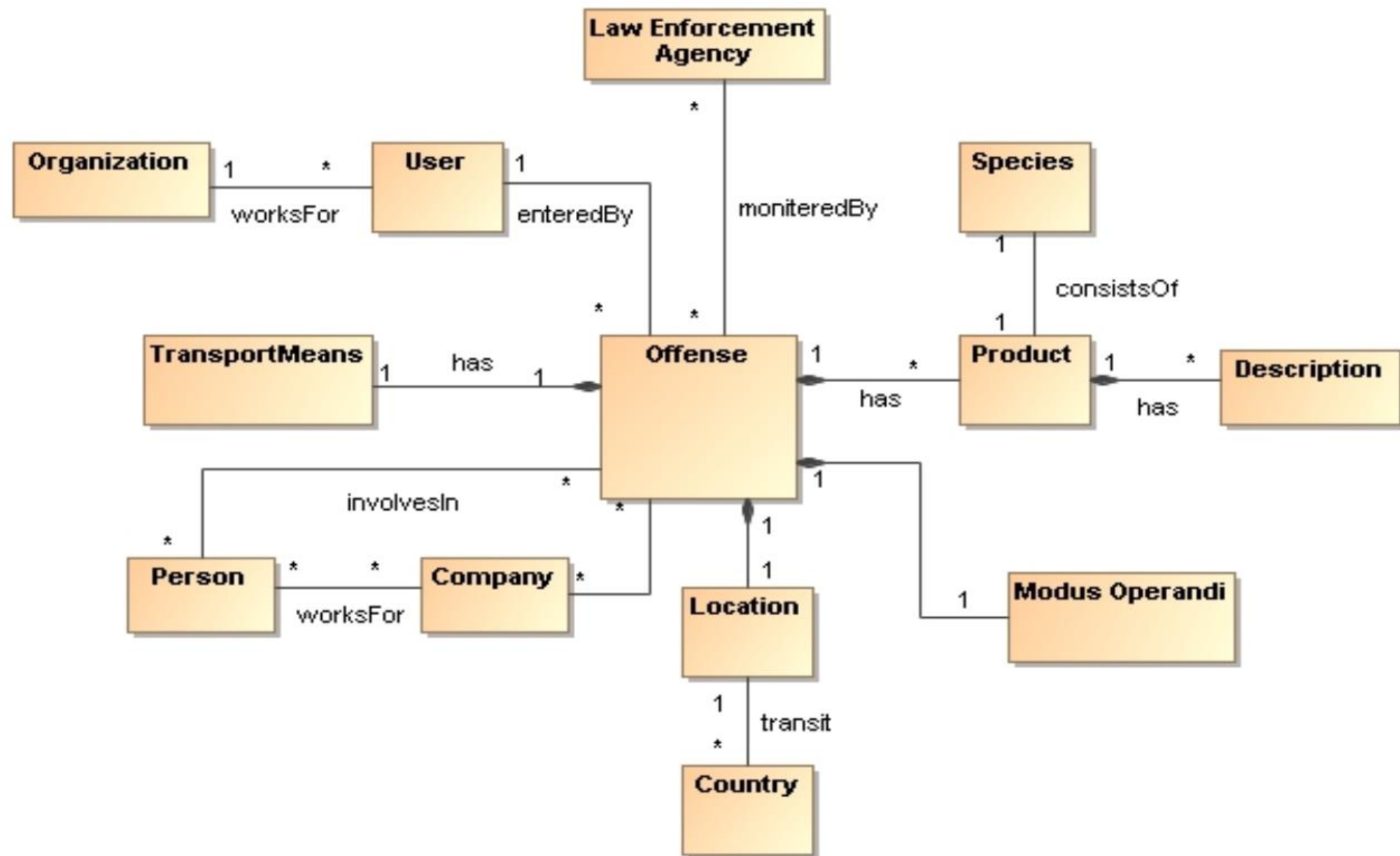
**CAPACITY
DEVELOPMENT
COMPONENT**



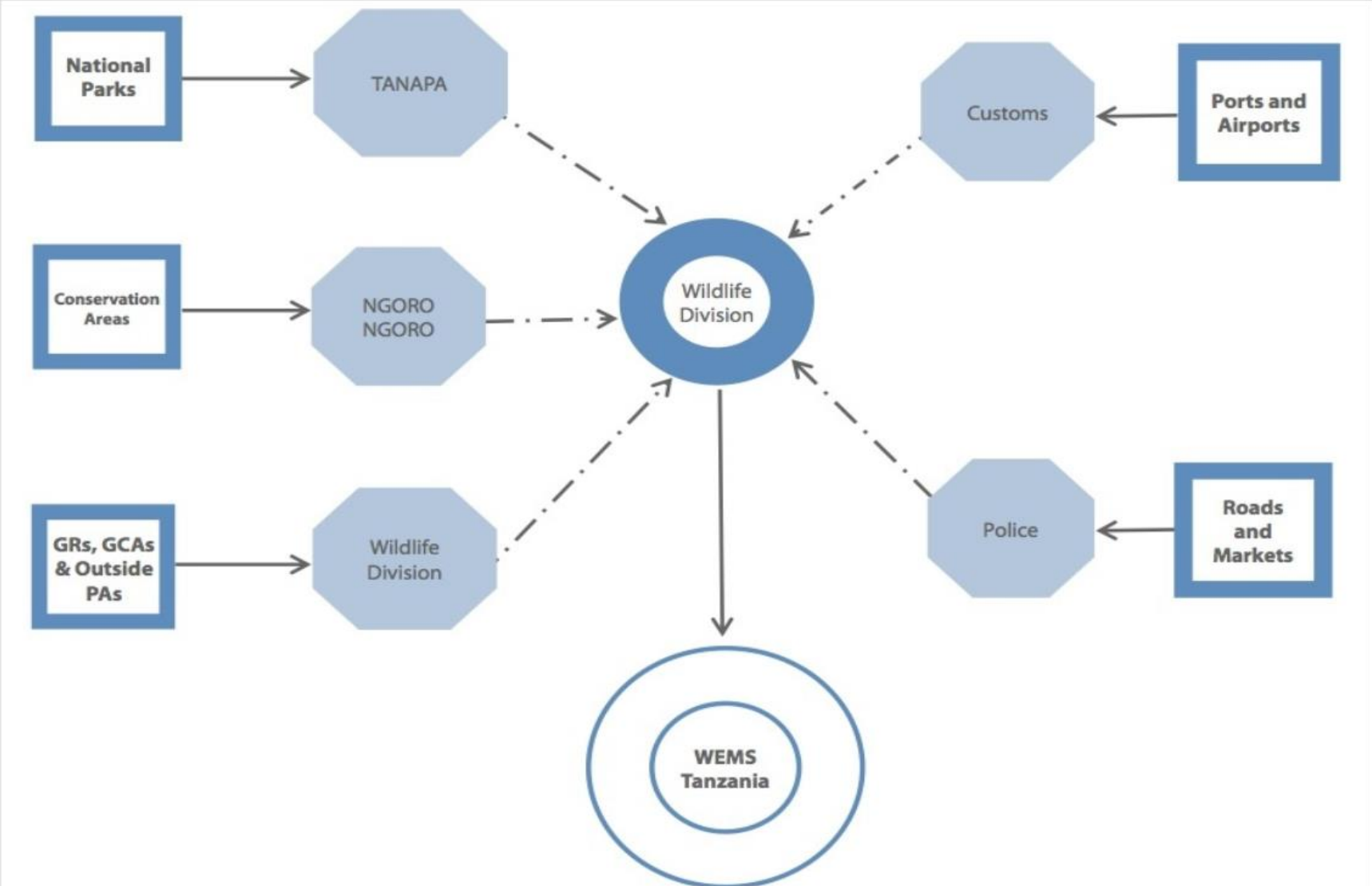
**RESEARCHES
AND OUTREACH
COMPONENT**

The information-sharing protocol under WEMS will be as depicted in the diagram below. For WEMS Africa, the LATF will facilitate the information exchange; while the role for WEMS Asia will be managed through the WEMS Secretariat at AIT.

WEMS Conceptual Model



Inter-agency Information-sharing at country-level



Note: GRs = Game Reserves; GCAs = Game Controlled Areas; PAs = Protected Areas; TANAPA = Tanzania National Parks; NGORONGORO = Ngorongoro Conservation Area



HOW THE WEMS PLATFORM WORKS

OUTPUTS

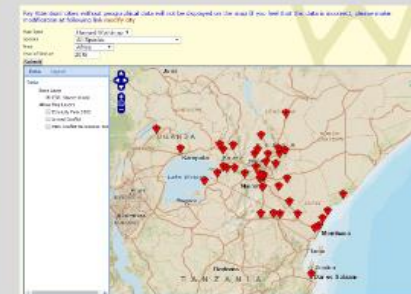
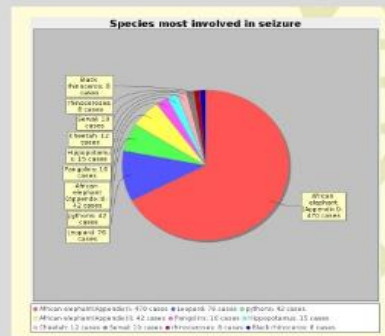
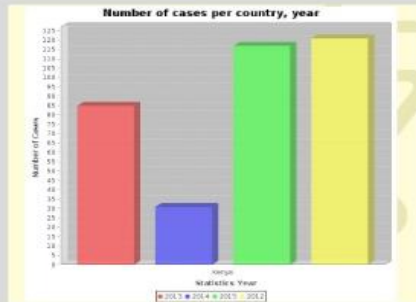
• Nominal Data



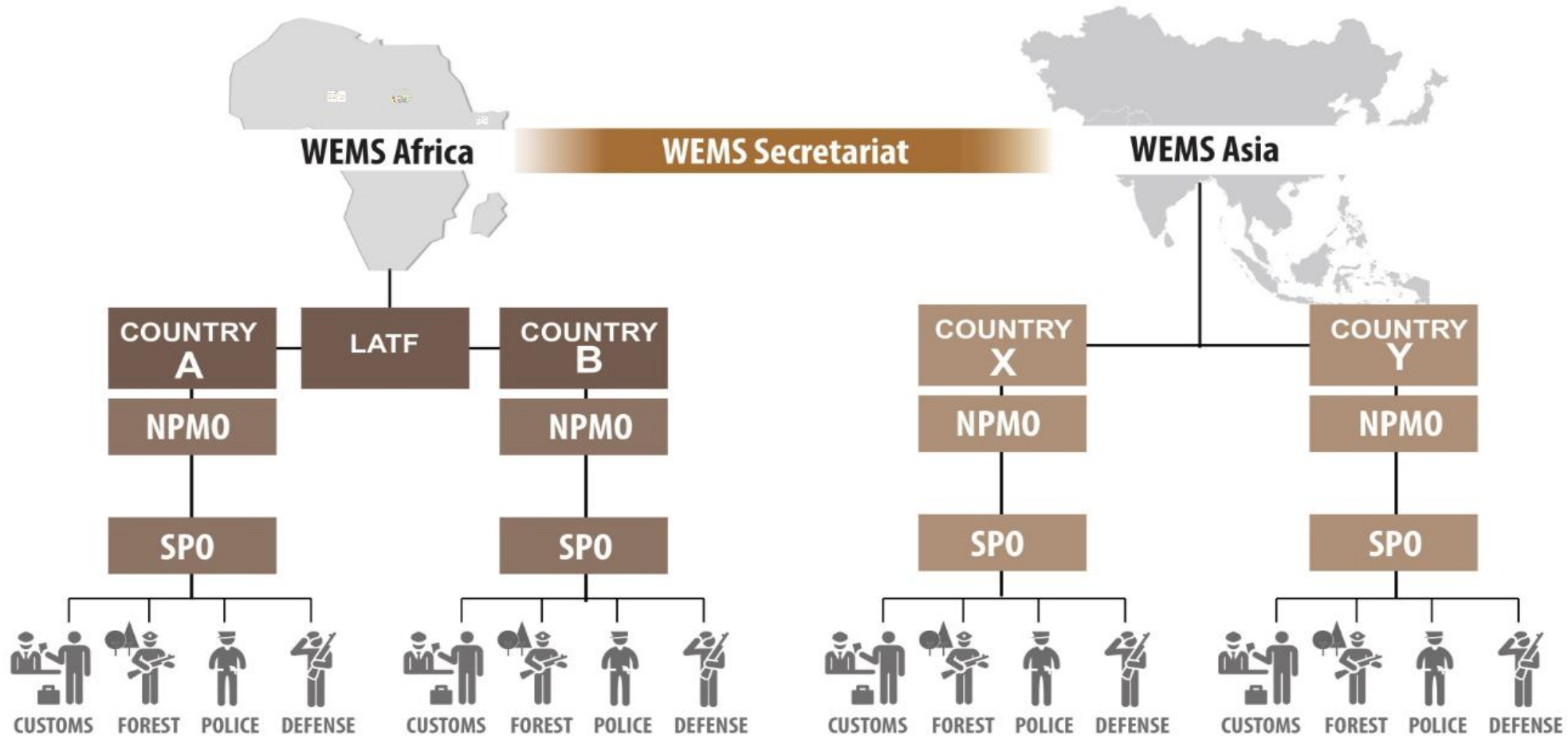
• Non-Nominal Data

• Non-spatial Data

• Spatial Data



The information-sharing protocol under WEMS will be as depicted in the diagram below. For WEMS Africa, the LATF will facilitate the information exchange; while the role for WEMS Asia will be managed through the WEMS Secretariat at AIT.



HOW IT SUPPORTS MEMBER STATES

- Empower member states in managing sensitive information and reporting
- Provide evidence of national efforts in meeting national targets and international commitments
- Adopting Sustainable Development Goals (SDGs) with specific targets to tackle critical issues
- Act as an informational platform that supports institutions at all levels, local, national, and international
- Generate evidence for robust environmental governance



Data Visualization Tools

- WEMS - Africa Dashboard

<http://arcg.is/0fiuHO>

WEMS – Thailand

<http://arcg.is/01evXy>

Current Activities:

Assessment of Wildlife Crime Databases

- Identify gaps in wildlife crime information-sharing for monitoring enforcement
- Establishment of an information-sharing mechanism for enhanced environmental governance in Asia
- Strengthen capacity for data collection and institution of of the community of practice for improved coordination and knowledge transference

Enhancing International Cooperation in Science, Technology and Innovation in Addressing Wildlife and Forest Crime; 10-13 April 2018; AIT



Implementations and Enchantments

Implementation in Africa and its replication in Asia is imperative to systematically dismantle the network of perpetrators through an effective transcontinental link across the supply chain.



Enhancements through integration of technologies will help development of capacity among key stakeholders and establishment of community of practice will reinforce law enforcement.

Space applications
forensics



DNA sequencing for wildlife





THANK YOU

<http://wems-africa.org:8080/wems-demo>

For further information, please contact:

Mr. Manesh Lacoul

Deputy Director

WEMS Secretariat,
AIT Solutions

Asian Institute of Technology
P.O. Box 4, Klong Luang
Pathumthani 12120
Thailand

+66-2-524 6653
manesh@ait.asia

